



THE DOME PROMENADE

PHOTO ESSAY BY
NORM HANSON

Sssssh!

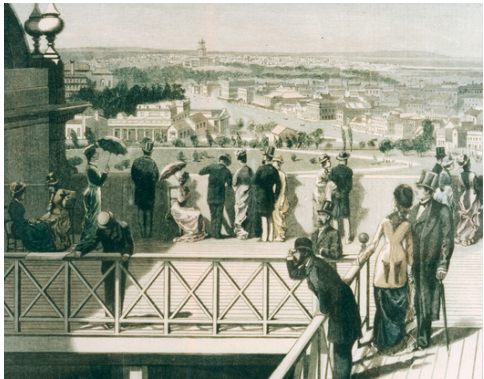
Anyone my age, that grew up in Melbourne, will be familiar with and visited the Royal Exhibition Building. Sometimes with excited anticipation, sometimes not. I have repressed memories of doing several exams with hundreds of other students silently scribbling below those vaulted ceilings.



A Bit of History

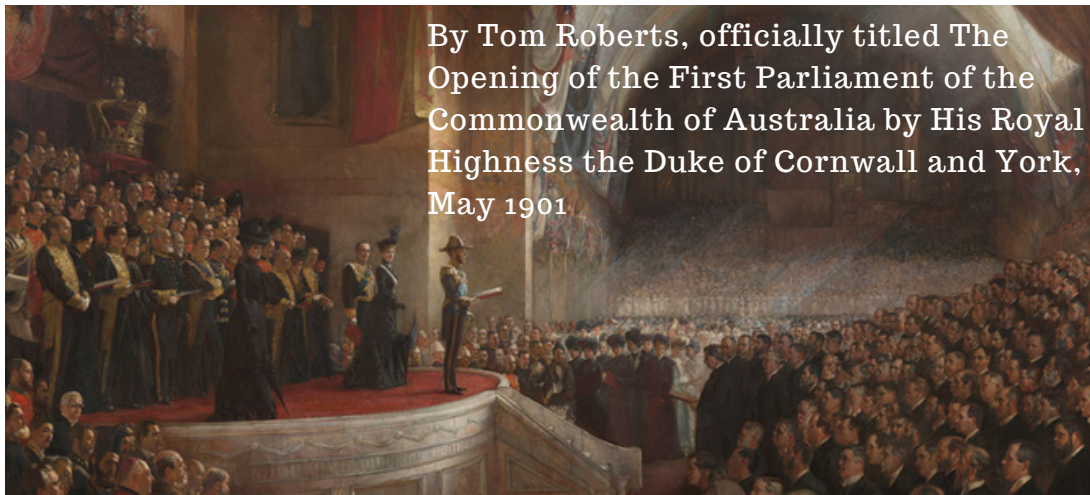
The Royal Exhibition Building is a UNESCO World Heritage listed building. It was built to host the Melbourne International Exhibition in 1880-81. It was also chosen as the site for the first sitting of the Parliament of Federation of the Commonwealth of Australia in 1901.

See also [Wikipedia](#)



"Big Picture"

By Tom Roberts, officially titled The Opening of the First Parliament of the Commonwealth of Australia by His Royal Highness the Duke of Cornwall and York, May 1901





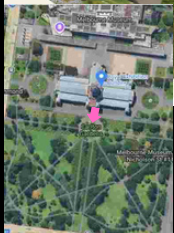
The Opportunity

Museums Victoria are planning to have guided tours of three levels, Basement, Viewing Promenade and Dome Artwork of the Royal Exhibition Building as restoration work is completed.

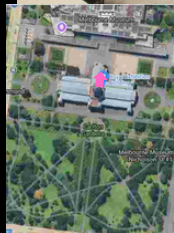
I took the opportunity of a special preview tour arranged by the Royal Society of Victoria

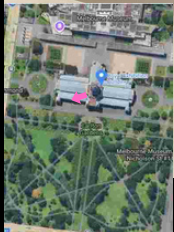














Resortation or Not?

The original Artwork on the inside of the Dome, was not cared for, covered by many layers of paint and building remodeling. It is a real challenge for conservators.





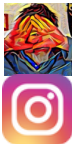






The Museum is planning to have guided tours soon running on various dates. Up to date details can be obtained from their website

<https://museumsvictoria.com.au/melbournemuseum/whats-on/royal-exhibition-building-dome-promenade/>



www.imageo.com
[@normhansonphoto](https://www.instagram.com/normhansonphoto)